

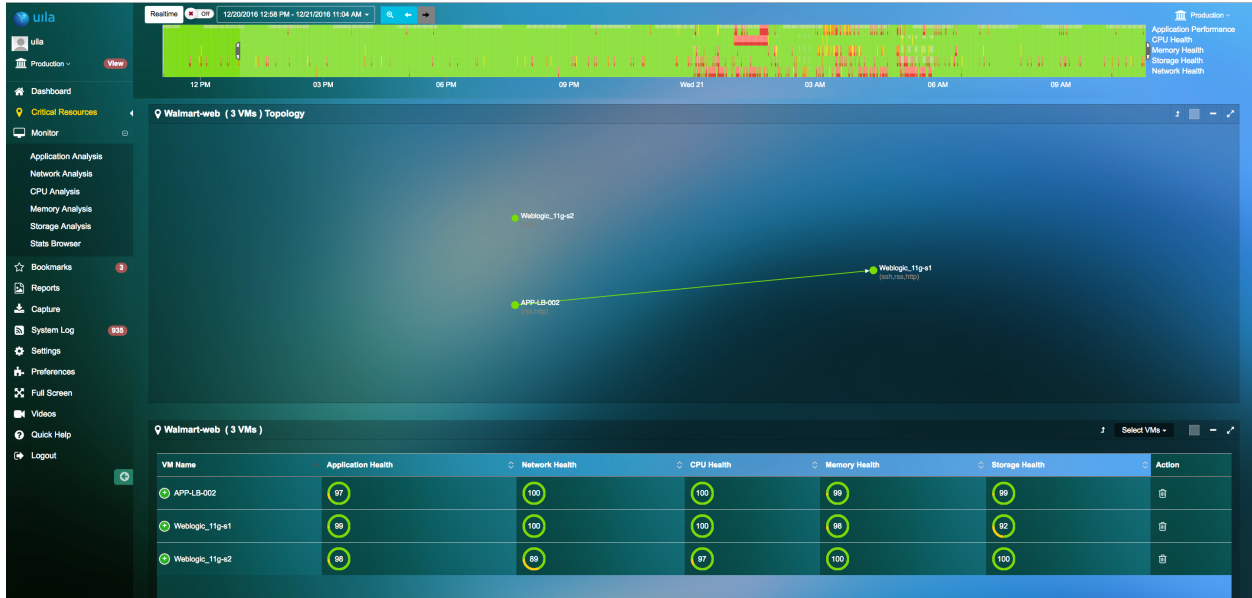
Uila 1.20 Release Notes – December, 2016

New Features:

1. Self-define dependent service map on Critical Resource View

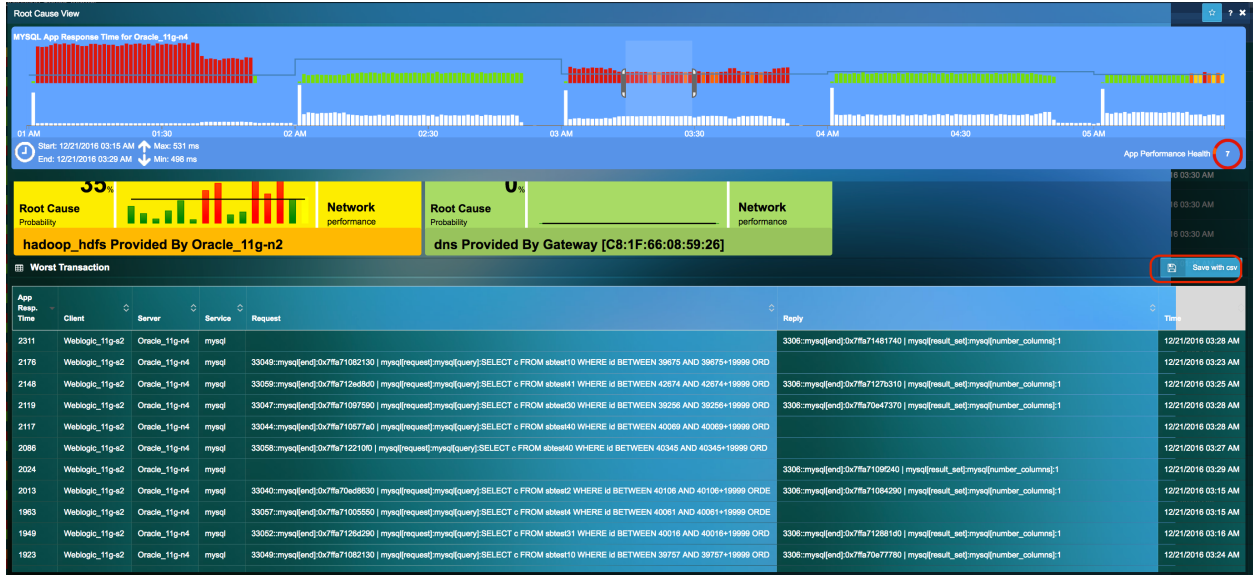


- Create a device group on Critical Resource view for your application system
- Add VMs or physical servers into the group for Uila to automatically draw the dependent



service map

2. Export worst transactions into a CSV file



Enhancements

1. Smooth Uila Hyper-V deployment
2. Allow users to squeeze graphics on Storage Analysis View
3. Enhance process monitoring

Critical Bug fixed:

1. Uila login gets locked up on 01/01/17
2. Browser crashes after leaving Uila real-time running in the background for a long time